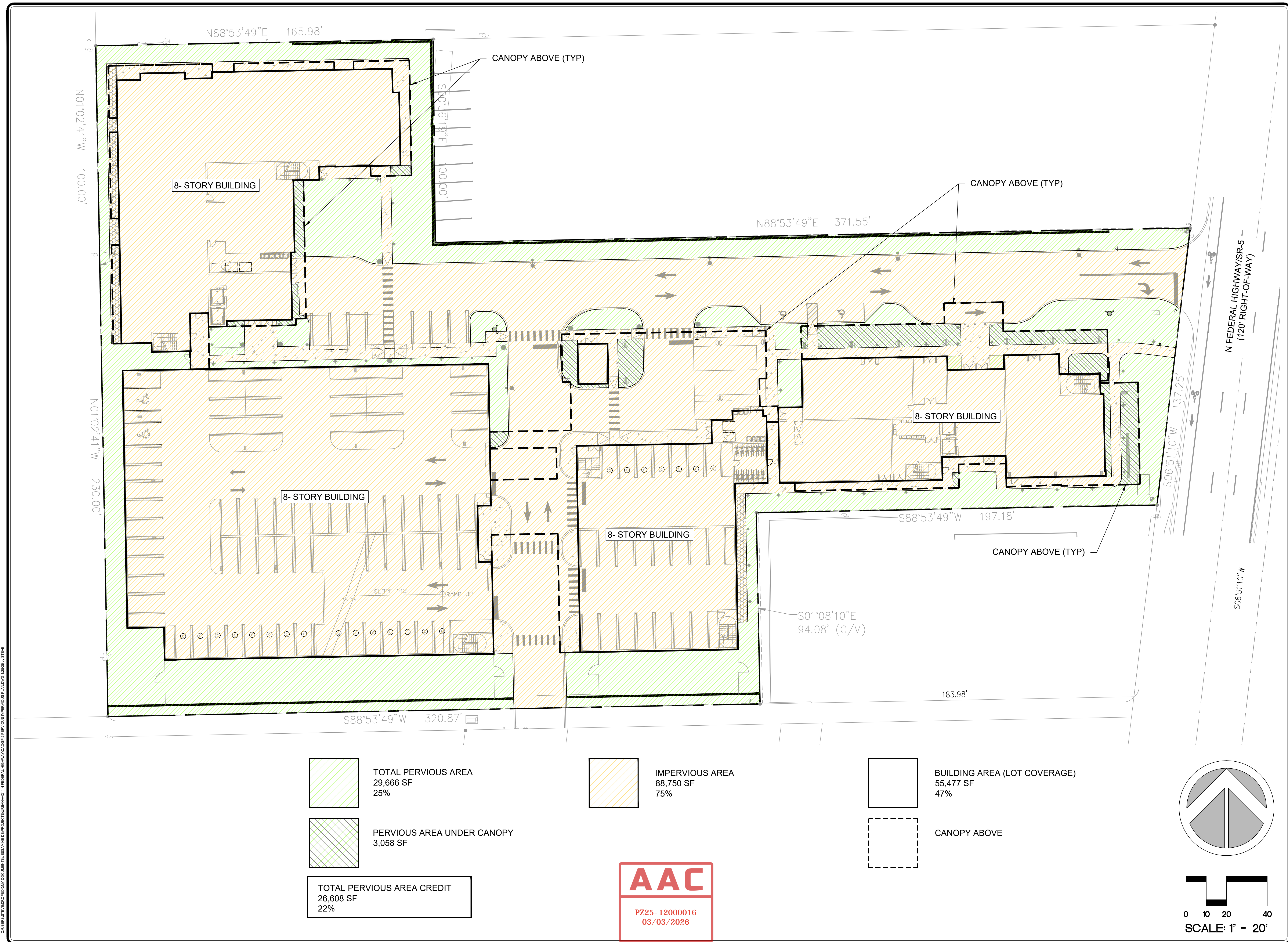


THE SATORI

4211 N FEDERAL HIGHWAY
POMPANO BEACH, FL

Sheet Title	PERVIOUS IMPERVIOUS PLAN
Revision Dates	10/27/25 - CITY COMMENTS
12/16/25 - CITY COMMENTS	
Date	02/02/2026
Sheet Number	SP-2
Seal	
STEPHEN M. PECCIA, PLA LA 6667289	



C:\BUREAU\STUDIO\PROJECTS\DOCUMENTS\JESSAMINE\PROJECTS\BANKAZI\N FEDERAL HIGHWAY\CDP 2 PERVIOUS IMPERVIOUS PLAN.DWG 10/26/25 STEVE